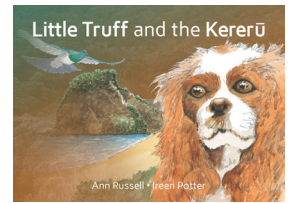
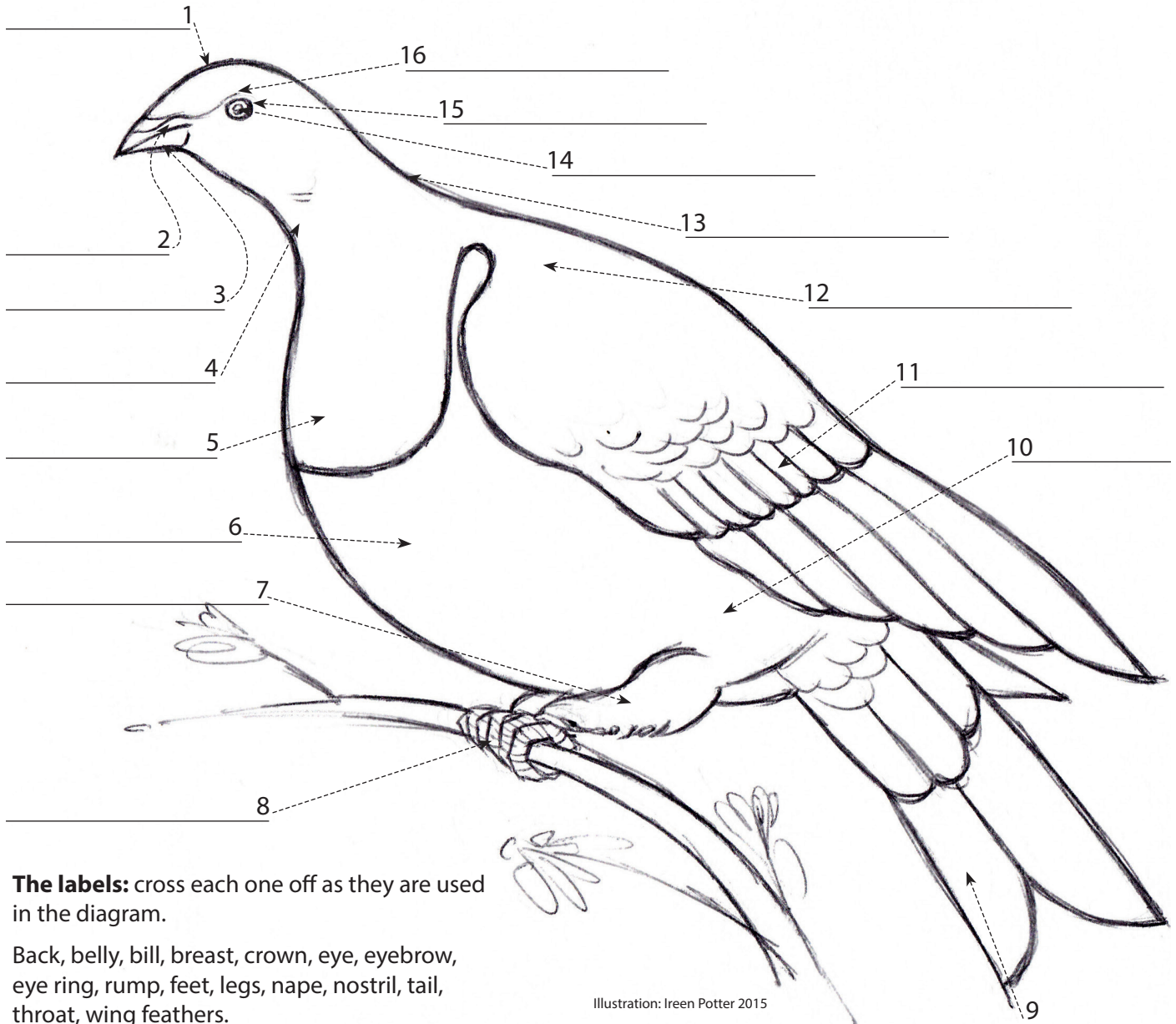


Label the Kererū



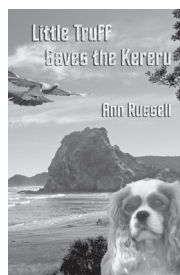
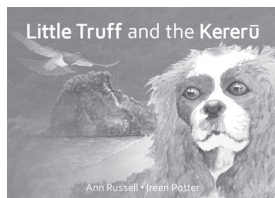
See if you can label the 16 body parts of the kererū or New Zealand native pigeon below. It will help to identify other birds, especially if you can remember the colour of their feathers, any special markings, the shape of their bill, and the length of their legs.



The labels: cross each one off as they are used in the diagram.

Back, belly, bill, breast, crown, eye, eyebrow, eye ring, rump, feet, legs, nape, nostril, tail, throat, wing feathers.

Illustration: Ireen Potter 2015



Ann Russell WRITER

Writing Children's Stories

www.annrussellwriter.com

www.annrussellbooks.com

Answers: 1 crown, 2 nostril, 3 bill, 4 throat, 5 breast, 6 belly, 7 legs, 8 feet, 9 tail, 10 rump, 11 wing feathers, 12 back, 13 nape, 14 eye ring, 15 eye, 16 eyebrow.

© Ann Russell 2015